

ETHAN
ALLEN®



90 YEARS OF
INNOVATION

90 YEARS OF
entrepreneurial
leadership



ETHAN ALLEN CHAIRMAN, PRESIDENT AND CEO
FAROOQ KATHWARI, WITH ETHAN ALLEN CO-FOUNDER
NAT ANCELL.



FAROOQ KATHWARI
CHAIRMAN & CEO

Beecher Falls, Vermont, became the birthplace of an American dream when Ethan Allen cofounders Nat Ansell and Ted Baumritter began crafting wood furniture during the Great Depression.

Hard work and the region's fierce, independent spirit fueled the ascent of **a proud American brand**. By 1980, Ethan Allen had expanded to 30 workshops, four sawmills, and about 250 independently operated Ethan Allen Galleries.

I first became associated with Ethan Allen in the 1970s when I started my own home products business and convinced Nat Ansell to partner with me. In 1985, when I was 39, Nat made me president of the company.

The vision of Nat and his senior team made my unique American story possible.

For 90 years, Ethan Allen has taken **the best elements of design from around the world and given them a distinctly American point of view**. By focusing on a single business, from manufacturing to retail, we have controlled our own destiny and remained profitable all these years.

"Always be innovating" is my ongoing challenge to everyone who serves the Ethan Allen brand. This magazine begins a yearlong celebration of our nine decades in business, and I congratulate the teams present and past who've made our success possible.

90 YEARS OF American style

EXCEPTIONAL PRODUCTS
AT INCREDIBLE VALUES

For 90 years, we've taken the finest designs from around the world and reimagined them with a distinctly American attitude.

We innovate classic looks to be balanced, uncluttered, and scaled for the 21st century. We reimagine modern style with a livable bent, marrying geometric forms and combining materials in an innovative way.

We express our uniquely American looks through **an incredible array of styles and infinite customization options**, including hundreds of fabrics, finishes, and

flourishes. We then apply innovative thinking to those materials; our performance fabrics, protected leathers, and durable finishes are made for homes where pets are part of the family and little fingerprints are part of the ambience.

Ninety years from now, people will see today's fashions as the visible expressions of our era: who we were and what we valued, the substance of our hopes and aspirations. From Ethan Allen, they'll see an ever-evolving, ever-innovative journey of American style.



THE **Timlyn**

WING CHAIR

The classic wing chair, refreshed with a swooping back silhouette that's unlike anything we've ever designed.



- HANDCRAFTED IN OUR NORTH AMERICAN WORKSHOPS
- TIGHT BACK, LOOSE SEAT
- HUNDREDS OF FABRIC AND LEATHER OPTIONS; DUAL FABRIC AVAILABLE
- OPTIONAL NAILHEAD TRIM AND CONTRAST WELT

SAVE 20%*
ON DESIGNER PICKS,
MATTRESSES, BEDDING & RUGS

SAVE 15%*
ON EVERYTHING ELSE

*SEE BACK FOR DETAILS

THE Reede

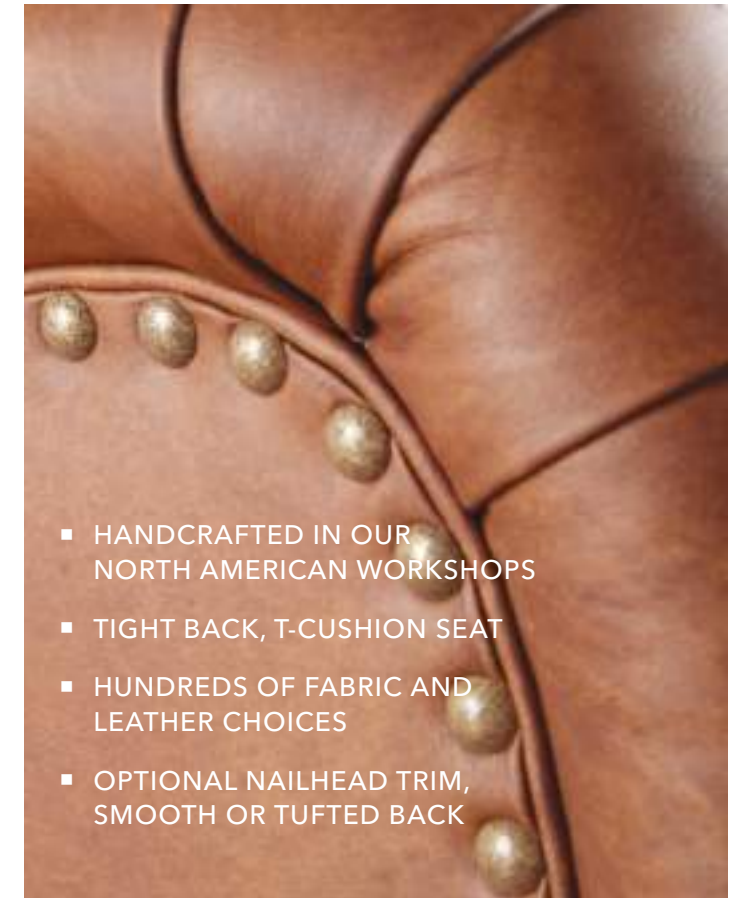
CHAIR

Reimagined with English arms and a T-cushion seat, the iconic club chair has now embraced its modern, livable side.



"Our designer was very professional in all her dealings with us, including following up promptly with any questions we had."

—Will J., Calgary, AB



THE **Burke** BED

Our Burke bed converts the traditional Jenny Lind into a wholly modern sleep experience.



- HANDCRAFTED IN OUR VERMONT WORKSHOPS
- AVAILABLE IN MAPLE OR BIRCH, OR OAK (SELECT FINISHES)
- WITH EITHER A TALL OR LOW FOOTBOARD
- MATCHING NIGHT TABLE ALSO AVAILABLE

SAVE 20%*
ON DESIGNER PICKS,
MATTRESSES, BEDDING & RUGS

SAVE 15%*
ON EVERYTHING ELSE

*SEE BACK FOR DETAILS

A COMMITMENT TO

North American manufacturing & logistics

FOR 90 YEARS AND COUNTING

A craftsperson from 90 years ago who walked into today's Ethan Allen workshops would find that certain processes still look familiar. They would also find **technology that empowers our artisans** to make each piece even more long lasting and more personalized to the way you live.

In our Beecher Falls, Vermont, workshop, we still mill our own logs; our lumber inspection team in Pine Valley, North Carolina, can still tell with one glance whether a piece of maple, cherry, oak, or birch meets our quality standards. We still dry lumber in our own kilns, craft **traditional joinery that stands the test of time**, and apply wood veneers and metallic leaf by hand.

We still begin each upholstery piece with a frame crafted from engineered hardwood, much of which comes from sustainable forests. We still source the finest fabrics in the world—all of which meet or exceed industry standards, about half from the U.S.—and cut and color-blend our leathers by hand.

We've embraced **21st-century innovations**, like laser-guided tools, but two things will never change: the pride and the passion that we have poured into our craft for 90 years.



OUR ARTISANS ALWAYS APPLY
TAILORED TOUCHES, LIKE WELTING
OR NAILHEAD TRIM, BY HAND.



THE Harley

LOUNGE CHAIR

Our artisans tailor Harley's seat and back cushion by hand, adding carefully placed welting for a sophisticated edge.



"Ethan Allen will go over and beyond to make sure their customers are pleased."

—Christina B., Mississauga, ON



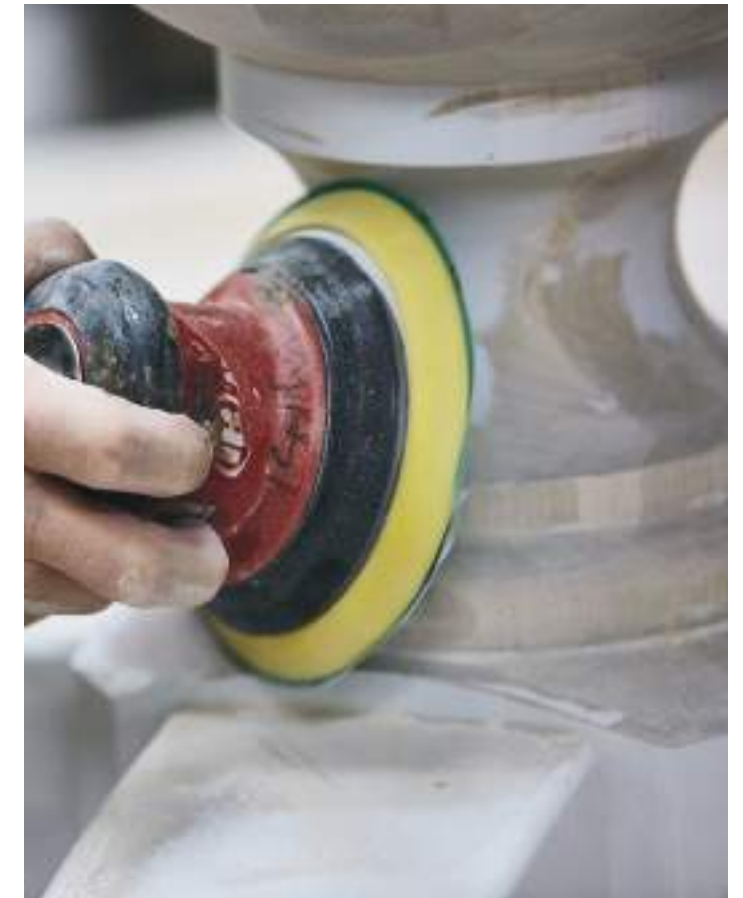
- HANDCRAFTED IN OUR NORTH AMERICAN WORKSHOPS
- LOOSE BACK AND SEAT CUSHIONS
- HUNDREDS OF FABRIC AND LEATHER CHOICES
- STAINLESS STEEL FRAME IN YOUR CHOICE OF BRASS OR NICKEL



THE Warren

END TABLE

Paint, glaze, spatter, distress, dry brush, sheen— it takes step after hand-applied step to give our Warren end table its vintage-inspired finish.



- HANDCRAFTED IN OUR NORTH AMERICAN WORKSHOPS
- MADE FROM APPALACHIAN HARDWOOD
- TURNED APRON AND BASE
- MULTIPLE FINISH OPTIONS, INCLUDING BLACK, WHITE, GRAY, BROWN, AND NAVY

HANDCRAFTED

EA Signature™

MATTRESSES

Benchmade in the U.S. from the finest materials, like gel-infused foam and tempered, individually wrapped innerspring coils, an EA Signature™ mattress is simply the finest mattress you'll ever own.

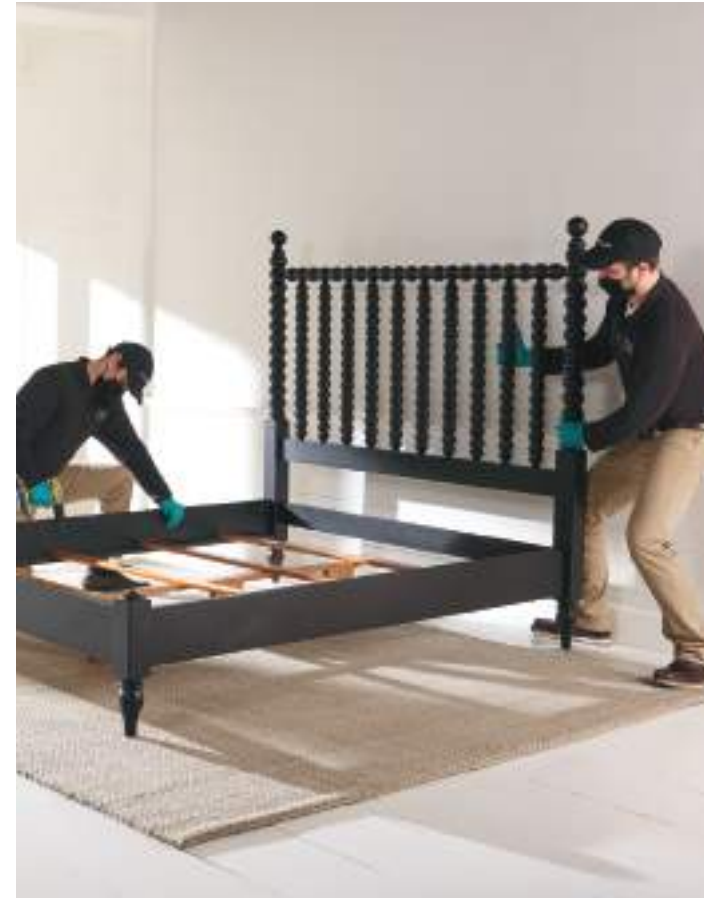
SAVE 20%*
ON DESIGNER PICKS,
MATTRESSES, BEDDING & RUGS

SAVE 15%*
ON EVERYTHING ELSE

*SEE BACK FOR DETAILS



"The men who delivered my couch were polite and professional. I am pleased overall!"
-Melyssa A., Thornhill, ON



You'll never meet a more courteous and conscientious team than our **white-glove delivery** professionals. They assemble your furniture if needed, place it exactly where you want it to go, and ensure that both setup and cleanup are spotless.

COMBINING
complimentary
interior design service

WITH TECHNOLOGY TO SHAPE
THE NEXT 90 YEARS OF DESIGN

One completely personalized space and one satisfied client at a time, our team of **more than 1,500 entrepreneurial designers** has brought design visions to life for people all around the world.

They start with your vision of your space, as told through inspiration images you've collected, a tour of your home, or the stories you share. They mix the pieces you love with new furniture and accents, coming up with ideas that they show you through line drawings, stunning

HD room plans, and fabric and finish samples—and **the extraordinary value of their service is offered at no charge to you.**

Our commitment to design technology opens up so many possibilities for the future. What will never change is our designers' dedication to honoring your budget, supporting you from concept to installation day, and creating spaces you'll love to come home to, year after year.



USING A MIX OF FABRIC AND FINISH SAMPLES AND OUR 3D ROOM PLANNER, OUR DESIGNERS HELP YOU ENVISION THE FUTURE OF YOUR SPACE.



THE Anderson

S O F A

"Tuxedo sofa" is the perfect term to capture Anderson's dashing, Hollywood Regency-inspired form, which you can dress in fabric with deep diamond tufts or drape in leather to leave the look taut and smooth.



3D ROOM PLANNER

Using both 2D and 3D, our designers bring your future space to life.

- HANDCRAFTED IN OUR NORTH AMERICAN WORKSHOPS
- TIGHT BACK AND SHELTER ARMS, LOOSE SEAT CUSHIONS
- SOLID WOOD BASE
- HUNDREDS OF FABRICS AND LEATHERS; OPTIONAL NAILHEAD TRIM



THE **Corin** DINING TABLE

A wealth of finishes and options, plus the stunning C curves on its trestles, make Corin a true designer's dream.



EA InHome® APP
Preview Ethan Allen
furniture or accents in
your existing space.

- HANDCRAFTED IN OUR NORTH AMERICAN WORKSHOPS
- CRAFTED FROM WHITE OAK OR APPALACHIAN HARDWOOD
- WITH A SMOOTH OR ROUGH-SAWN TOP
- ROUND OR RECTANGULAR; FIXED AND EXTENSION OPTIONS



THE Milton

DINING CHAIR

In some finishes, Milton is a classic, spindle-back Windsor chair; styled differently, it's a Scandinavian-inspired midcentury moment.



COMPLIMENTARY
DESIGN SERVICE
At Design Centers, online,
and via virtual housecall.

- HANDCRAFTED IN OUR NORTH AMERICAN WORKSHOPS
- MADE FROM SOLID OAK
- MULTIPLE FINISH OPTIONS



socially responsible & sustainable

FOR THE NEXT 90 YEARS AND BEYOND

We're committed to a future that **preserves our natural resources while ensuring dignity and justice** for artisans all over the world.

From the sustainable Appalachian forests where we source much of our cherry, maple, and oak lumber to the low-HAP, low-VOC finishes that help keep the air clean from our workshops to your home, **we consider sustainability every step of the way.** We burn recycled wood chips and sawdust to cogenerate electricity in the Vermont workshops where production begins. We optimize the delivery routes of our vehicles to minimize carbon emissions and fossil fuel consumption.

When we partner with vendors around the world, we work with them one on one, helping them to **make workspaces safer and to ensure fair labor standards** for every artisan. It's our privilege to make the work they love and excel at available to the world.

From corporate giving initiatives to individual volunteer efforts, we're committed to a better future for our communities. We want every home—for you, for our artisans, and for our Earth, the home we all share—to be as happy, healthy, and prosperous as can be.



THE Isaiah

RUG

Artisan-crafted rugs like Isaiah, which are knotted by hand, can contain as many as 100 knots per square inch.

SAVE 20%*
ON DESIGNER PICKS,
MATTRESSES, BEDDING & RUGS

SAVE 15%*
ON EVERYTHING ELSE

*SEE BACK FOR DETAILS



- CRAFTED FROM AFGHANI LUSTER WOOL; KNOTTED BY HAND
- TRICOLOR YARNS ADD EXTRAORDINARY DEPTH OF COLOR AND A STRIATED LOOK
- DURABLE RUG PADS ALSO AVAILABLE



HAND-PAINTED Porcelain

JARS

Before crafting our porcelain vases, artisans apprentice for as long as a decade just to learn the underglazing technique.

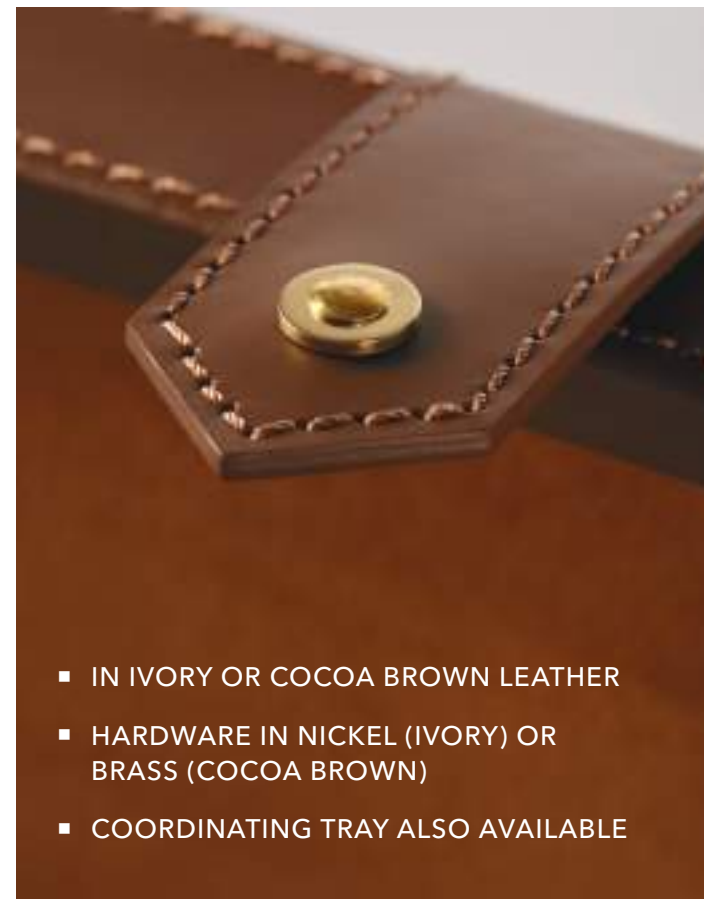
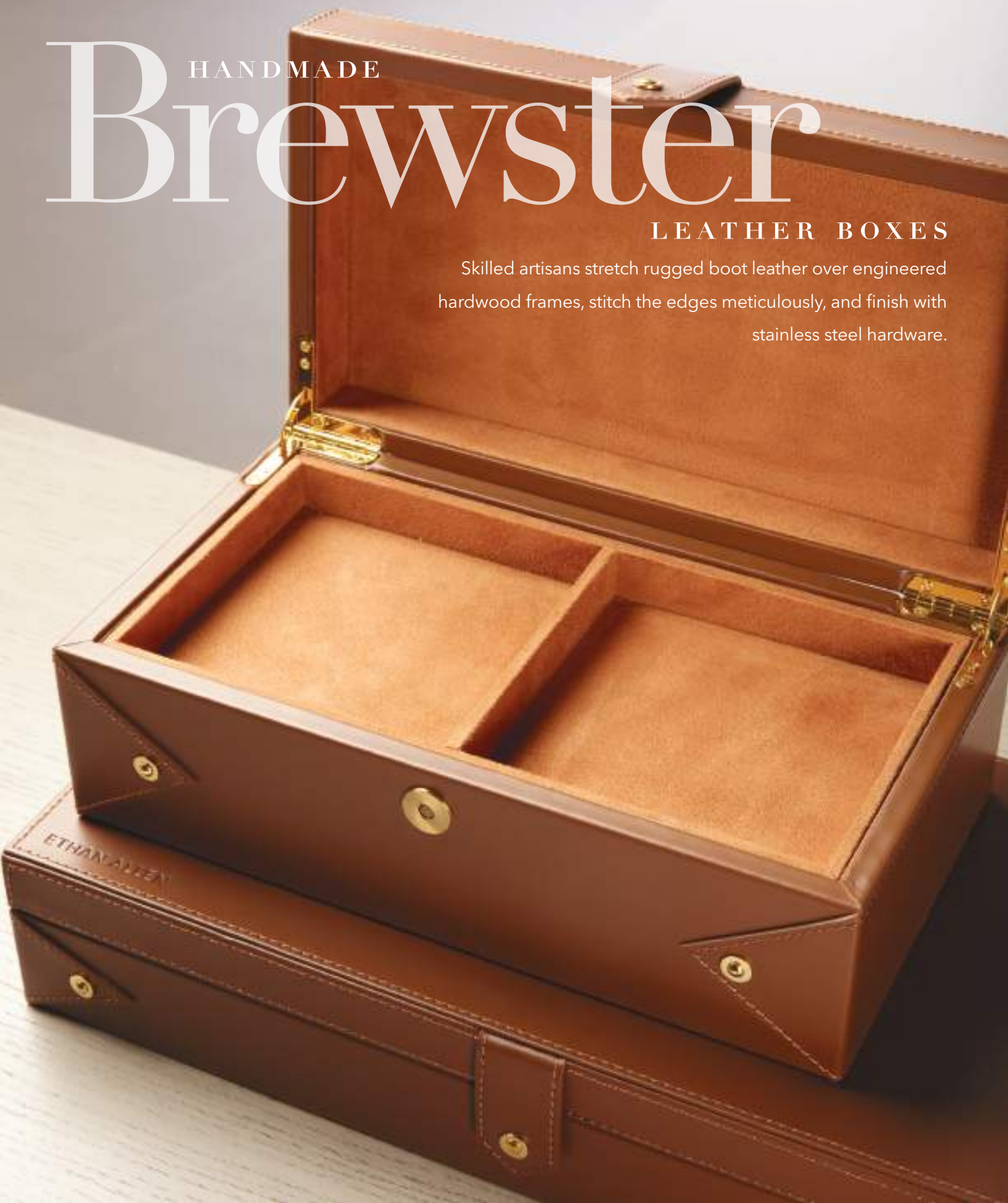


- CRAFTED FROM HIGH-QUALITY CLAY
- PAINTED AND GLAZED BY HAND
- AVAILABLE IN A RANGE OF STYLES AND MOTIFS

HANDMADE Brewster

LEATHER BOXES

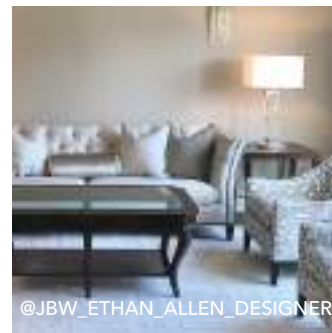
Skilled artisans stretch rugged boot leather over engineered hardwood frames, stitch the edges meticulously, and finish with stainless steel hardware.



- IN IVORY OR COCOA BROWN LEATHER
- HARDWARE IN NICKEL (IVORY) OR BRASS (COCOA BROWN)
- COORDINATING TRAY ALSO AVAILABLE

SHARE THE LOVE AS #EACelebrates90

Now that you've seen some of our favorite iconic Ethan Allen designs, we'd love to see yours. Share your images and tag them @ethanallen for the chance to be featured on our website!



*Discounts are taken off our regular prices. Prior reductions may have been taken. Select styles will be offered at 20% off their regular prices; all others will be offered at 15% off. Excludes clearance items, select new product introductions, and wallcoverings. Offer cannot be applied to prior purchases, pending deliveries, sales tax, shipping and delivery charges, gift certificates, or furniture protection plans and cannot be combined with any other savings offers, sales, discounts, coupons, or promotions except applicable financing offers. Offer ends January 31, 2022. Ask a designer or visit ethanallen.ca for details.

All information is current as of January 1, 2022, and is subject to change without notice. We are not responsible for typographical errors. Please visit a Design Center or ethanallen.ca for sale details and current information. Prices and services are optional for each retailer. All items may not be displayed at every Design Center. Final products may vary from display. Certain names and marks are proprietary and owned by Ethan Allen Global, Inc. ©2022 Ethan Allen Global, Inc. Danbury, CT. All rights reserved. Printed in USA (B).