



ETHAN ALLEN®

— WE MAKE THE AMERICAN HOME™ —

Craft & Custom

CUSTOM DINING TABLES & BUFFETS
MADE WITH PRIDE IN VERMONT

DIGITAL BROCHURE SERIES
EDITION 8



FAROOQ KATHWARI, Chairman and CEO

OUR LEADERSHIP IN ENVIRONMENTAL RESPONSIBILITY

flows from the environment in which we work

10 LEADERSHIP PRINCIPLES

LEADERSHIP

Lead by example.

CHANGE

Embrace new opportunities.

ACCESSIBILITY

Be supportive and recognize the contributions of others.

SPEED

React quickly at pivotal moments.

CLIENT FOCUS

Put clients first. Their satisfaction is our highest priority.

HARD WORK

Be known for your work ethic, every day.

EXCELLENCE + INNOVATION

Strive for the highest quality and embrace the entrepreneurial spirit.

PRIORITIES

Differentiate between the big issues and small ones.

CONFIDENCE

Have the confidence to empower others to do their best.

JUSTICE

Make fair and thoughtful decisions.

At Ethan Allen, we tackle new challenges by thinking like entrepreneurs. Many company-wide innovations have been spearheaded in our Craft & Custom workshops.

RENEWABLE ENERGY

In Vermont, winters are tough, with median daily high temperatures of around 25°F. We used to burn #4 fuel oil for energy to power our workshops and keep them warm. Now, we mostly generate electricity using leftover sawdust and wood chips.

WE REUSE MORE THAN 5 TONS OF WOOD CHIPS AND SAWDUST FOR ENERGY EVERY YEAR.

WATER CONSERVATION

Before logs become furniture, they have to be kept wet; otherwise, they'll split and crack. At our workshops, we added water restrictors to make sure we use only the minimum amount of water needed.

SINCE 2010, WE'VE CONSERVED MORE THAN 11 MILLION GALLONS OF WATER.

RECYCLING

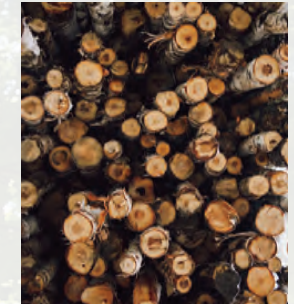
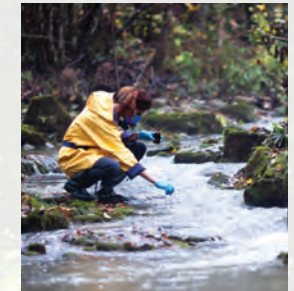
Keeping waste out of landfills means finding ways to reuse as much as we can. Our Craft & Custom team recycles construction debris, shipping skids, and so much more.

WE'VE KEPT MORE THAN 183 MILLION POUNDS OF WASTE OUT OF VERMONT'S LANDFILLS.

CARBON FOOTPRINT

Relamping our workshops with LED lighting, installing computerized boiler controls, and switching to energy-efficient heat pumps has helped our Craft & Custom workshop slash its carbon footprint.

WE'VE CUT OUR CO₂ OUTPUT BY 30% AND OUR GREENHOUSE GAS EMISSIONS BY 25%.



OUR RECOGNITIONS

2-TIME WINNER OF THE VERMONT GOVERNOR'S AWARD FOR ENVIRONMENTAL EXCELLENCE

6-TIME VERMONT BUSINESS PARTNER, VT DEPT. OF ENVIRONMENTAL CONSERVATION



WITHIN THESE WOODS
LIVES AN
EXTRAORDINARY
TRADITION

*brought to life by our passion
for things well made*

The people of Orleans, Vermont, pride themselves on a slower pace of life. In surroundings like these—mountains, woods, and clean, crisp air—we can take the time to get every detail right.

Many of us have perfected our craft here for more than 30 years—just as our parents did, and their parents before them. Within our 667,000-square-foot workshop in Orleans, we still build and finish every piece of furniture by hand.

- We use **floating construction** whenever possible, so solid wood panels can naturally expand and contract without splitting or cracking.
- We use **dovetail construction** on every drawer, with Hettich Undermount Drawer Slides for effortless opening and closing.
- We use the same durable **mortise-and-tenon joinery** that we've been crafting for more than 80 years.

We apply our finishes by hand, using low-VOC and low-HAP coatings that keep the air cleaner from our workshop to your home. Each buffet and table top has a durable top coat that adds water resistance while enhancing the beauty of the finish. Even the insides of each drawer, and the underside of each tabletop, have a UV coating that protects against fading and accidental dings and divots.

As **certified Appalachian Hardwood Manufacturers members**, we're committed to the environment and to the responsible stewardship of our forests. We purchase and mill logs in Vermont, with additional lumber sourced in the U.S. Conservation is in the culture here; after all, the wood comes from the land where we make our homes.

After you design your table or buffet, we will custom-craft it from feet to finish. Our pride will be evident in all that we do.

This is what we mean when we say, "We make the American home."





LET THE JOY OF MAKING SOMETHING ENTIRELY YOUR OWN

fill the heart of every joyful get-together

The people in your dining room may come and go, the home you live in may change, but the dining furniture you create through Craft & Custom will stay with you.

The details you choose should come from the heart because you're doing more than creating furniture; you're furnishing the heart of your home.

Size to your space, and consider an extension for special occasions.

Top each piece with a smooth or textured surface.

Edges for tables can be flat, eased, or shaped for formal flair.

Legs and feet give each piece its own distinct personality.

Doors and drawers transform buffets from storage to statement pieces.

Finishes can be customized in a range of timeless neutrals—cottony white, sleek black, soothing gray or taupe—and can be either uniform, lightly distressed, or wire-brushed to bring out the wood grain.

Craft & Custom combines craft—the artistry you expect from Ethan Allen—with custom: the satisfaction of having something made just for you.

All the chairs in this brochure are made with pride in Ethan Allen's North American workshops, and they're the perfect addition to any Craft & Custom project. Explore our selection online, or get expert advice from any of our designers.





SET A TABLE THAT TELLS A STORY

before your stories are told around it

determine the length

WITH FIXED TOP:
 42" sq. (seats 4)
 62"l x 38"w (seats 6)
 72"l x 42"w (seats 8)

WITH EXTENSION:
 Up to 62"l (seats 6)
 Up to 82"l (seats 8)
 Up to 112"l (seats 10)

**FIXED DINING TABLE
(30" HEIGHT)**



**EXTENSION DINING TABLE
(30" HEIGHT)**



take it from the top

SMOOTH



TEXTURED



give it an edge

FLAT/EASED



**SHAPED
(AVAILABLE WITH
SMOOTH TOP ONLY)**



settle on a finish

All of our custom dining furniture is available in either regionally sourced maple or oak. Because these woods are known for their durability, they stand up beautifully to everyday use.

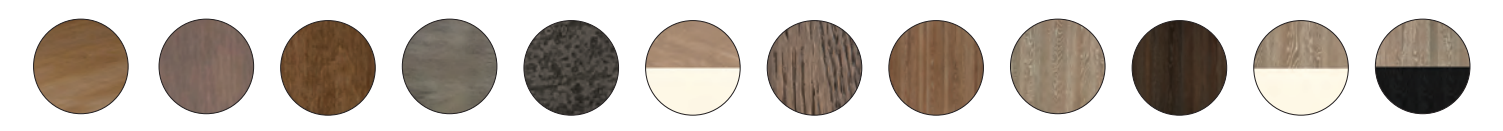
MAPLE

A smooth, sturdy canvas that takes its style cues from your finish choice.

OAK

Beautifully textured for country living; adds a welcoming flavor to formal décor.

Both maple and oak can be customized for you in a range of colors. If you're in the mood to mix things up, choose a separate look for your tabletop and base.



CHOOSE LEGS THAT
ELEVATE THE NARRATIVE



7 compelling characters



KASEN
Clean, modern,
simple



MILLER
Boldly country
or farmhouse



CHAMPLAIN
Sculpted,
serpentine,
sophisticated



CRANBROOK
Updated
cottage or
casual



GUILFORD
Versatile,
refined, chic



PARSONS
Substantial;
goes casual or
modern



AVERY
Classic, elegant,
cultivated



GATHER INGREDIENTS FOR A BUFFET

to store everything for gatherings large and small

establish your serving size

TWO-DOOR BUFFET (37" L X 19" D X 36" H)



NO DRAWER



WITH DRAWER

FOUR-DOOR BUFFET (70" L X 19" D X 36" H)



NO DRAWERS



WITH DRAWERS

get the right mix of door & drawers

Choose glass doors if you have china or keepsakes you want to show off; go with wood panel or beadboard doors if you prefer more discreet storage. Add drawers for stashing essentials like silverware, table linens, and candles.

BEAD FRAME DOOR (WOOD OR GLASS PANEL)

Classic and simple



BEADBOARD DOOR

Country or casual



MOLDED FRAME DOOR (WOOD OR GLASS PANEL)

Formal and refined



PLAIN DRAWER

Basic and precise



BEADED EDGE DRAWER

Versatile in many designs



MOLDED EDGE DRAWER

Timeless and traditional





perfect its color & texture

Like our Craft & Custom tables, our buffets are crafted from domestically sourced maple or oak. They're available in a range of neutral finishes that showcase techniques like hand-distressing or wire-brushing to enhance the grain.



garnish with fabulous feet

PARSONS
Modern or casual



PIN
Casual yet detailed



URN
Dressy and sophisticated



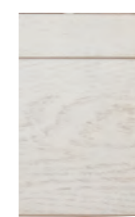
COLLARED
Simple yet elegant



TAPERED
Clean and versatile



PLINTH
Solid and well appointed



serve with proper hardware

Buffets come standard with Blackened Pewter hardware; for additional options, visit a Design Center.



add a topping

SMOOTH



TEXTURED



ENJOY COMPLIMENTARY DESIGN SERVICE

to complement your dining room vision



Decide what style story you want your dining furniture to tell:

fabulously formal or comfortably casual? Something classic, or a fresh take on farmhouse? Share your thoughts with one of our designers, who will help you put every element of your custom table or buffet together in the Design Center, at your home, or via virtual appointment.

If you prefer to work online, you can still get complimentary assistance from one of our world-class designers. Simply click our Designer Chat button to start one of the most productive online conversations you'll ever have.



EXPERIENCE EXCEPTIONAL IN-HOME DELIVERY

*worthy of exceptionally
crafted furniture*



*The pride that we take in crafting
your furniture begins in Vermont
and ends right in your dining room.*

Our delivery specialists carefully inspect your furniture to ensure it's as flawless as it was the day it left our workshop. Then they bring each piece into your dining room, place it, and remove all packaging, leaving only your complete satisfaction behind them.



A WELL-DRESSED WELCOME

Mixes formal and casual elements

✓ 72" EXTENSION TABLE

✓ TEXTURED TOP

✓ EASED EDGE

✓ HOMESTEAD GRAY /
OAK CHARCOAL FINISH

✓ AVERY LEGS



Meanwhile in Vermont:

Rather than gluing our tabletops to their aprons, we attach them with Z clips. The wood can expand and contract naturally, which prevents splitting or cracking as your home's temperature and humidity levels change.



MODERN SERENITY

Clean, calming lines and visible texture

✓ 62" FIXED TABLE

✓ SMOOTH TOP

✓ FLAT EDGE

✓ HOMESTEAD SABLE FINISH

✓ KASEN LEGS



YOUR COTTAGE AWAITS

Time-loved distressing by design

✓ FOUR-DOOR BUFFET

✓ SMOOTH TOP

✓ BEADBOARD DOORS

✓ CHARCOAL FINISH

✓ URN FEET

✓ BLACKENED PEWTER HARDWARE



Meanwhile in Vermont:

After painstakingly preparing the surface, we apply your finish to your buffet door by hand. Then, we add one of three inserts: a wood panel, a beadboard panel, or a piece of tempered glass.



SNUG IN ANY SEASON

Crisp white energizes a small space

✓ 42" FIXED TABLE

✓ TEXTURED TOP

✓ EASED EDGE

✓ DAKOTA/CIRRUS WHITE FINISH

✓ CRANBROOK LEGS



Meanwhile in Vermont:

After turning table legs and buffet feet on a lathe, we sand each curved surface to make it perfectly smooth. This step keeps paint or stain looking impeccable, even on less visible parts of your furniture.



Meanwhile in Vermont:

Some manufacturers use one standard drawer size for every furniture piece—that's not done in our workshops. We custom-craft each drawer to the proper depth, using dovetail joinery on all four corners.



RELAXATION REFINED

Touchable texture with formal details

- ✓ FOUR-DOOR BUFFET WITH DRAWERS
- ✓ SMOOTH TOP
- ✓ MOLDED EDGE GLASS DOORS
- ✓ HOMESTEAD GRAY FINISH
- ✓ COLLARED FEET
- ✓ BLACKENED PEWTER HARDWARE

FASHIONABLY FARMHOUSE

Modern yet warm with visible wood grain

- ✓ 62" FIXED TABLE
- ✓ TEXTURED TOP
- ✓ EASED EDGE
- ✓ HOMESTEAD CHARCOAL FINISH
- ✓ PARSONS LEGS



COUNTRY RETREAT

Warm finish, bench-made sensibility

✓ 62" FIXED TABLE

✓ SMOOTH TOP

✓ FLAT EDGE

✓ HOMESTEAD LIGHT BROWN
OAK FINISH

✓ GUILFORD LEGS



Meanwhile in Vermont:

Much of the wood furniture we make comes from logs milled in our own Vermont sawmill. We work to source as much wood as possible from sustainably managed forests.





WILL YOU TURN THEM MODERN?
SPIN THEM COUNTRY?
FINISH THEM FORMAL?

Test out your design ideas at ethanallen.com/custom-dine,
and visit a Design Center to see even more options.