

HEIGHTS OF
style

COUNTRY & COASTAL
ELEVATED FOR 2021



ETHAN ALLEN®

DIGITAL MAGAZINE SERIES
EDITION 10

CRAFTED

*to bring a refined viewpoint
to Country & Coastal.*

The finest pieces of furniture are reflections of their collector's good taste. At Ethan Allen, we begin with Country & Coastal concepts—those influenced by pastoral scenes and quiet, relaxed coastal living.

We then, through thoughtful details, exquisite color choices, and fabulous fabric and finish options, elevate these pieces to new and unexpected heights of style and sophistication.

Each piece is an example of exquisite woodworking, expressed in kiln-dried frames, time-tested joinery, and careful hand-carving. Upholstery is sized, cut, tufted, and welted, just so.

Above all else, our enduring quality and reputation for craftsmanship is unmatched by any other makers of furniture.



Leadership

“At Ethan Allen, empowering others to do their best is a guiding value behind our business. Knowing the ability to lead lies within each of us, we are proud to support our community members with mentorship and the access to opportunities that will help craft them into our next generation of strong, just leaders.”

FAROOQ KATHWARI
Chairman and CEO

\$700,000+

GIVEN TO
STUDENTS

1,000+

SCHOLARSHIPS GIVEN TO
CHILDREN OF ASSOCIATES

\$1 MILLION

GIVEN TO SUPPORT
A LOCAL STATE UNIVERSITY
HONORS PROGRAM



defined

The tranquil neutrality of a cool coastal palette rises to elegant levels with details, like gold-tone nailheads, that define lines and flow through undulations, adding sumptuousness in their simplicity.



interpreted

*Refined with resplendencies
that suit our point of view.*



CULTIVATED

Enriching our interior landscape with elements at fresco that are picked with care and attention to placement. A row of whimsical trees makes a stylish and stately backdrop.



POLISHED

*Plush and peaceful, dreamt
as lush and luxurious.*



TREASURED

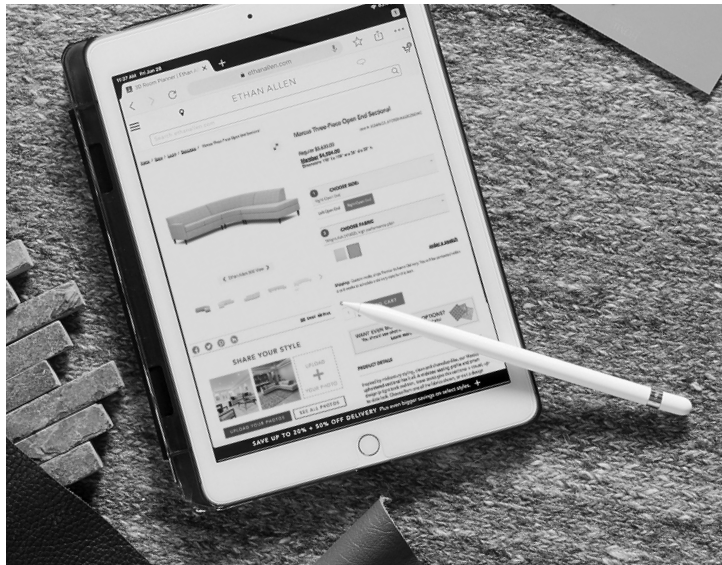
*Collected elements are reimagined
as eloquent accessories, telling a story
with sentiment and style.*



INSPIRED

*A crisp palette of pleasing blues
rouses the senses and sensibilities.*





DESIGNED

*by world-class visionaries,
conveyed in powerful 3D technology*

A great designer can bring a posh perspective to country and coastal landscapes, infusing these interiors with elegance and the essence of the person who lives there.

Our vision of interior design is collaborative. We work with you in the place that inspires you, whether that's in our Design Center, where you can explore with your senses, or in your home, where you can convey who you've been, who you are, and where you're going.



For clients who are designing vacation homes far away, or who simply prefer to work remotely, we collaborate via Live Chat, email, videoconference, and more, using our 3D Room Planner to show you how our concept for your space will come to life.

Our design vision is original, our execution, impeccable—and our technology and personal service, second to none.





TAILORED

from the finest fabrics and leathers

Have you ever seen an artisan tuck and sew a piece of upholstery fabric around a curved beechwood frame?
Have you watched a classic roll-arm chair get an elegant update, in cut and color-blended leather?

Artistry like this happens every day in Ethan Allen's workshops, where we still hand-tailor every piece of upholstery. Every stitch, every welt, every accent button, every nailhead—all placed by human hands, and guided by human vision.

Choose from hundreds of exceptional fabrics and leathers; our artisans will take it from there, tailoring your furniture exquisitely, by hand, and transforming beautiful materials into a finished masterpiece.



composed

*Harmony in nature. Balance in design.
The comfortable offsets the coveted,
creating an enviable interior landscape.*



CURATED

*What speaks to our heart
tells of our style.*



RELAXED

There's an elegance to be found in the easy. Laid-back has its own luxurious style that is both impressive and inviting.



ENRICHED

To have a room with a view, you need only surround yourself with those beautiful essentials that please your eye.

BURKE BED
Available Spring 2021



DELIVERED

to your home with service that's worthy of exceptional furniture

To honor the hours and the care invested into crafting each Ethan Allen piece, and the time you've spent waiting for its arrival, we work tirelessly to make sure that you receive exactly what the artisan envisioned.

When a piece leaves our workshop, it's carefully wrapped to ensure it stays safe in transit. When it arrives at our service center, we open it, inspect it to make sure it's just as it was when it left the workshop, and rewrap it for its journey to your home.

When we arrive, we bring the wrapped piece inside and place it exactly where you designed it to be. Then, we unwrap it, assemble it if needed, and take the packaging with us.

The only trace you'll see of our presence is the beauty we leave behind.



graced

*Sleek lines in weathered finishes.
Wide weaves in comfortable
proportion. A gathering is on
the horizon at a table set with
elemental luxuries.*



unexpected

*Surprise and delight are the key
design elements of enlightened style.*





DISCOVERED

Reflecting nature's patterns echoes their beauty in the most splendid ways.





ADORNED

One striking piece can change the entire atmosphere. Leave them pondering which piece, when all are equally stunning.

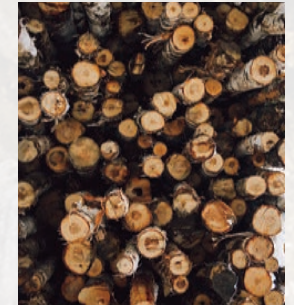
sustained

*by a custom-crafted legacy of conservation
and respect for the environment*

Fast furniture has its place; that place is not at Ethan Allen. We still make 75% of our products in our own North American workshops. In fact, many environmental innovations are spearheaded by the artisans who make your furniture. That's because we manage every process, from sketch to sample to finished piece.

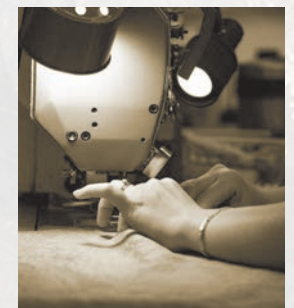
A WOOD FURNITURE WORKSHOP THAT RUNS PRIMARILY ON RENEWABLE ENERGY

Located in the heart of Vermont's Northeast Kingdom, our Orleans workshop burns recovered sawdust and wood chips to cogenerate electricity. A few years ago, one of our plant managers realized that by changing the conditions in which we stored our fuel, we could get twice as much energy from it.



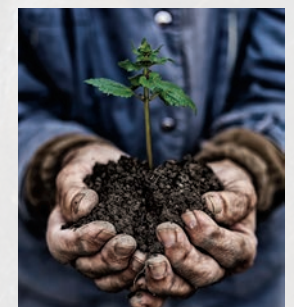
AN UPHOLSTERY WORKSHOP THAT KEEPS REUSABLE MATERIALS OUT OF LANDFILLS

At our upholstery workshop in Maiden, North Carolina, you'll find the Shrink Smart machine, invented by our plant manager in partnership with a trusted vendor. It custom-cuts the shrink wrap we use to package our furniture; so far, we've kept enough plastic out of landfills to stretch more than 75 miles.



A DELIVERY SYSTEM THAT KEEPS CARBON EMISSIONS UNDER CONTROL

Because we manage everything, including the delivery of our products, we can control our logistics to crush our carbon footprint. We use fuel-efficient technologies whenever possible, and we carefully route our vehicles to minimize the number of miles they drive.



TAKING THINGS A LITTLE MORE SLOWLY MEANS OWNING EVERY DETAIL, INCLUDING HOW EVERYTHING WE DO AFFECTS OUR PLANET. **TO LEARN EVEN MORE ABOUT OUR ENVIRONMENTAL INITIATIVES, VISIT [ETHANALLEN.COM/RESPONSIBILITY](https://ethanallen.com/responsibility).**

cherished

A sectional is the cornerstone of a structured space built for relishing treasured downtime. Populate this area with curated notions and comfortable items.







DETAILED

No stone unturned—in step with your aspirations, our designers bring every little unique element to light.



REALIZED

From our custom house to your elegant home, we balance the elevated with the easy and bring a new perspective on comfort as a sophisticated style.





PERSONALIZED

our services are available via in-person or virtual appointment

Your interior designer stands ready to curate and compose your new space. Simply reserve an appointment in the way that works best for you, whether you prefer to collaborate in a Design Center, in your home, or via videoconference.

- Search for your nearest Design Center at ethanallen.com/locations.
- Click the "Make an Appointment" button beside your preferred location.
- Enter your information, and a designer will follow up with you.

You can also find your Design Center's phone number, browse through our interior designers' portfolios, contact a designer using the email address they've provided, or click our "Designer Chat" button to speak almost instantly with an interior designer.

FIND YOUR NEAREST DESIGN CENTER